

SERIES 1965

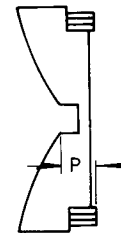
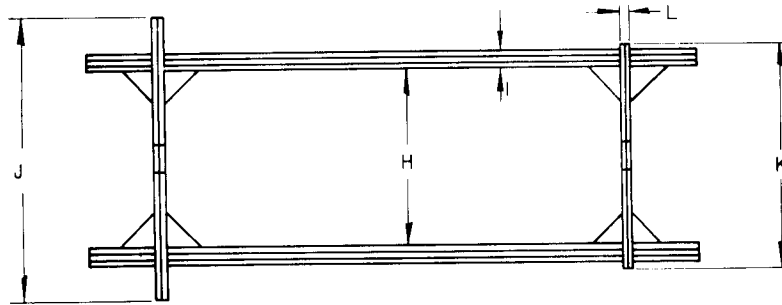
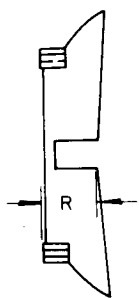
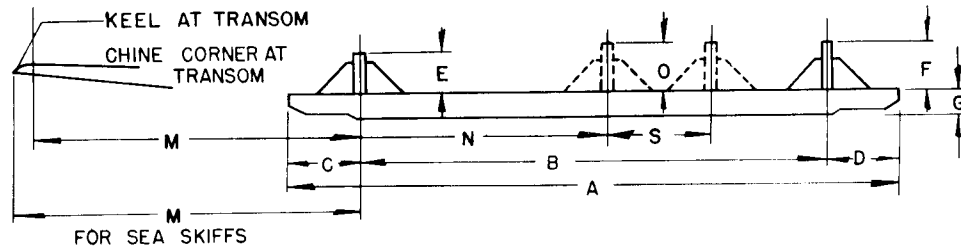
CRADLE DIMENSIONS

DWG NO. 10-00-10554

DATE 10-30-64

NOTE: NO CRADLE PADDING INCLUDED IN THE FOLLOWING DIMENSIONS

BOAT STYLE C/RAFT	A	B	C	D	E	F	G	H	I	J	K	L	M	N	O	P	R	S
17' CUSTOM & SUPERSPORT	10'-0"	6'-6"	1'-9"	1'-9"	7"	5"	7 1/2"	40"	1 5/8"	6'-0"	3'-7"	1 5/8"	4'-0"			7 5/8"	11 3/8"	
18' SUPER SPORTS	12'-0"	8'-9"	1'-9"	1'-6"	7 5/8"	9 1/2"	7 1/2"	40"	1 5/8"	6'-0"	3'-7"	1 5/8"	3'-9 1/4"			9 1/2"	1'-3/4"	
20' SUPER SPORTS	12'-0"	8'-9 1/4"	1'-10 1/2"	1'-4 1/4"	9 7/8"	11 5/8"	7 1/2"	40"	1 5/8"	6'-0"	3'-7"	1 5/8"	4'-11"			8 5/8"	1'-25/8"	
21' SUPER SPORTS	14'-0"	11'-1"	1'-6"	1'-9"	8 1/4"	1'-1/8"	7 1/2"	40"	1 5/8"	6'-0"	3'-11"	1 5/8"	3'-3"			8 1/8"	1'-11/8"	
28' CONSTELLATION	16'-0"	12'-2"	2'-0"	1'-10"	1'-2"	1'-5 1/4"	7 1/4"	4'-5/8"	3 1/4"	8'-1"	7'-2"	3 1/4"	5'-103/8"			10"	1'-2"	
30' CONSTELLATION	18'-0"	13'-6"	2'-3 1/8"	2'-2 7/8"	1 1/8"	1'-4"	7 5/8"	4'-5"	3 1/4"	9'-1 1/4"	6'-4 1/2"	3 1/4"	6'-4 1/4"			10"	1'-2 1/2"	
32' CONST. & EXPRESS	20'-0"	16'-5"	22"	21"	11 1/2"	17 3/4"	7 1/2"	58 1/2"	4 7/8"	9'-0"	6'-8 1/4"	3 1/4"	5'-6 1/2"	9'-3"	13"	4"	6"	
36' CONST. & SEDAN	24'-0"	20'-0"	22 1/2"	25 1/2"	11 1/4"	16 1/2"	7 1/2"	60"	4 7/8"	9'-3 1/2"	6'-5 1/4"	3 1/4"	4'-6 1/2"	10'-3 3/4"	11 3/4"	4 1/2"	8 1/2"	
37' CONSTELLATION	22'-0"	19'-1"	16"	17"	11"	14"	7 1/2"	60"	4 7/8"	8'-11 1/2"	6'-5 3/4"	3 1/4"	6'-0"	9'-11 1/4"	11"	5 1/4"	8 1/2"	
38' CONST. SALON	24'-0"	19'-10"	26"	24"	15 3/4"	22"	7 1/2"	60"	4 7/8"	10'-0"	8'-0"	3 1/4"	4'-10 1/2"	9'-6 1/4"	15"	5 1/2"	11 1/2"	
38' COMMANDER & SEDAN	24'-0"	19'-2"	1'-11 1/2"	1'-11 1/2"	1'-2"	1'-11 1/4"	8 1/4"	5 1/2"	4 1/2"	9'-8 1/2"	7'-6"	3 1/2"	4'-11 1/2"	10'-1"	1'-4"	2'-7 1/2"	1'-11"	
38' COMMANDER-SPORTFISH		SAME	AS	ABOVE		E-2	1'-4"		J-2	9'-9"								
43' CONSTELLATION	27'-0"	22'-7"	26 1/2"	26 1/2"	13"	16"	9 5/8"	67 1/4"	4 7/8"	10'-6"	9'-0"	3 1/4"	3'-3"	11'-7"	12"	7 1/2"	18"	
46' CONSTELLATION	27'-3"	22'-10"	26 1/2"	26 1/2"	15 1/2"	15"	9 5/8"	67 1/4"	4 7/8"	10'-10"	9'-3 1/2"	3 1/4"	6'-8"	11'-5 1/4"	12 1/4"	7"	19"	
52' CONSTELLATION	37'-2"	34'-2"	2'-0"	18"	2'-5"	2'-4"	9 5/8"	67"	6 1/2"	10'-11 1/2"	9'-6"	3 1/2"	3'-9"	13'-9 1/2"	1'-11"	1'-11 1/2"	2'-10 1/2"	11'-10"
57' CONSTELLATION	38'-11 1/2"	32'-7 1/2"	3'-2"	3'-2"	2'-3 1/2"	2'-7"	9 5/8"	67"	6 1/2"	8'-11 1/2"	8'-1 1/2"	3 1/2"	9'-3"	13'-3"	1'-11"			
65' CONST. & MOTOR YACHT		SEE DRWG.	NO. 10-00-04014															
SEA SKIFF																		
19' SPORTSMAN	12'-0"	8'-8"	1'-8"	1'-8"	4 1/3 1/8"	4 1/3 1/8"	7 1/2"	34 5/8"	1 5/8"	5'-11"	4'-11"	3 1/4"	4'-7"			8 3/8"	1'-2"	
22' SPORTSMAN	14'-0"	10'-1"	1'-11 1/2"	1'-11 1/2"	11 1/2"	8 3/4"	7 1/2"	46"	3 1/4"	6'-4"	5'-5 1/2"	3 1/4"	4'-4 3/4"			5 3/4"	1'-3/4"	
24' SPORTSMAN & RANGER	14'-0"	10'-8"	19 3/4"	21 1/2"	15 3/4"	13 3/4"	8"	48"	2"	7'-6 3/4"	4'-11 1/4"	4"	4'-10 1/2"			11"	16 3/4"	
28' SPORTSMAN	16'-0"	12'-5"	20 1/2"	23"	15"	17 1/2"	8"	48"	4"	8'-0"	6'-3"	4"	5'-13 1/4"			12"	15 3/4"	
28' EXPRESS	16'-2"	11'-3"	2'-5"	2'-6"	1'-35 5/8"	1'-4 1/2"	7 1/4"	48 5/4"	3 1/4"	8'-1"	7'-2"	3 1/4"	5'-103/8"			10"	1'-2"	
32' SPORT/C. & SEAHAWK/C	20'-0"	16'-9"	20"	20 1/4"	17 1/2"	21 1/4"	8"	54"	4"	7'-8"	6'-1 1/2"	4"	5'-1 1/2"			11"	18 1/2"	
35' SEA HAWK	20'-0"	18'-0"	12 1/2"	13"	17 1/4"	18"	8"	58 3/4"	4"	8'-13 3/4"	7'-5"	4"	5'-4"			9"	15 1/2"	
38' SEA HAWK SEDAN	20'-0"	17'-10"	13 1/2"	14 1/2"	12 1/2"	19"	8"	58 1/2"	6"	9'-2"	7'-2"	4"	7'-5 1/4"			8 1/2"	12 3/4"	
38' SEAHAWK SPORT.FISH.		SAME	AS	ABOVE														
CAVALIER																		
16' SKI BOAT	10'-0"	7'-7"	1'-3"	1'-2"	7 1/2"	7"	7 1/2"	40"	1 5/8"	5'-7"	3'-7"	1 5/8"	2'-6"			6 7/8"	11"	
18' SKI BOAT	10'-0"	6'-7"	1'-8"	1'-9"	7 3/4"	9"	7 1/2"	40"	1 5/8"	5'-11"	4'-4"	1 5/8"	4'-4"			6 3/4"	9 3/4"	
22' DORY & CUTLASS	12'-0"	9'-5 1/4"	1'-33/4"	1'-3"	1'-35/8"	1'-5 1/4"	7 1/2"	48"	1 5/8"	6'-4"	5'-4"	1 5/8"	2'-10"			8 1/4"	12 1/4"	
25' FUTURA & SEASTRAKE	16'-0"	9'-2 1/2"	4'-6 1/2"	2'-5 1/2"	9 1/2"	15 3/4"	8"	45"	2"	6'-7"	6'-3 1/2"	2"	6'-8 1/2"			9 1/2"	11 1/2"	
27' FUTURA & SEASTRAKE	16'-0"	9'-10"	4'-0"	2'-4 1/2"	15 1/2"	16 3/8"	8"	45"	2"	7'-4 1/4"	5'-10"	2"	7'-4 1/4"			9 3/4"	15 3/4"	
30' FUTURA & SEASTRAKE	16'-0"	12'-7 1/2"	1'-8 1/2"	1'-8"	1'-5"	1'-9 1/2"	7 1/2"	48 1/2"	3 1/4"	8'-10"	6'-11"	3 1/4"	7'-5"			11"	14"	
33' FUTURA & SEASTRAKE	20'-0"	16'-0"	2'-2"	1'-10"	1'-4"	1'-9 1/8"	7 3/8"	52 3/4"	3 5/16"	9'-4"	7'-1"	3 1/4"	5'-9 1/4"	7'-11 1/4"	1'-6"	7 1/2"	1'-11 1/4"	8'-3"
36' YACHT. & SEASTRAKE	22'-0"	18'-3"	2'-0"	1'-9"	15 1/4"	1'-8"	7 1/2"	58 1/2"	4 7/8"	9'-6"	7'-11 1/4"	3 1/4"	5'-7"	9'-8 1/2"	1'-4"	5 1/8"	11 1/2"	
ROAMER	AS LISTED	ON	DRWG NO. A-101403															
30' DISPATCHER & CRUISER	216"	170"	23"	23"	16 5/16"	19-1/8"	7 5/8"	57"	4 7/8"	111 3/4"	106 1/2"	3 1/4"	54 5/8"			9 11/16"	14 1/8"	
33' RIVIERA	216"	176 1/4"	20"	19 3/4"	18 5/16"	15 1/8"	7 5/8"	57"	4 7/8"	118"	117"	3 1/4"	69 9/16"			8 1/4"	15 3/4"	
37' RIVIERA	264"	224 3/8"	19 13/16"	19 13/16"	18 3/4"	18 3/16"	7 5/8"	57"	4 7/8"	129"	116"	3 1/4"	78"	127 7/8"	14 3/4"	6 5/16"	15 1/8"	
38' OFFSHORE	264"	206"	25"	33"	20 1/8"	18 5/8"	7 5/8"	57"	4 7/8"	131"	120 3/8"	3 1/4"	81 1/2"	93"	17 1/2"	4 7/8"	21 1/4"	
48' RIVIERA	360"	317"	21 1/2"	21 1/2"	16 3/16"	23 7/8"	9 1/2"	57"	4 7/8"	131 1/2"	115 1/8"	3 1/4"	78 7/8"	176"	18 1/4"	4 1/4"	16 15/16"	
57' MOTOR YACHT	456"	375"	40 1/2"	40 1/2"	26 3/4"	30"	11 5/8"	84"	4 7/8"	147 5/8"	135 1/8"	4 7/8"	118 1/8"	135 1/4"	25 1/8"	PK1 = 14 7/8"	RJ1 = 3 1/8"	120"
										J2 = 153 1/4"	K2 = 152-7/8"					PK2 = 17 3/4"	RJ2 = 23 5/8"	



SERIES 1963

CRADLE DIMENSIONS

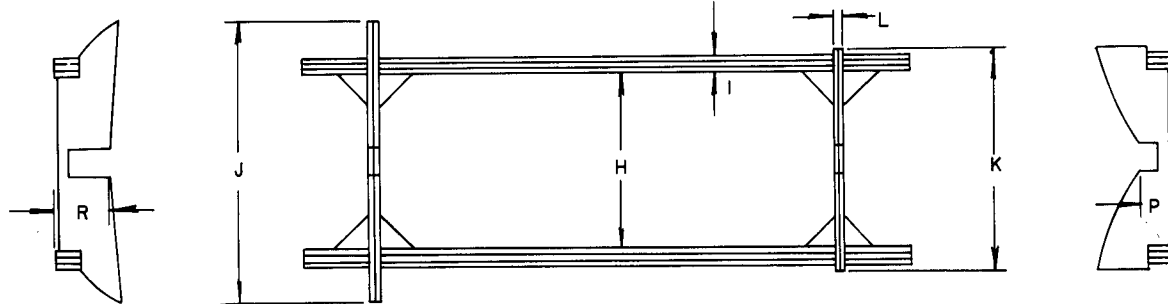
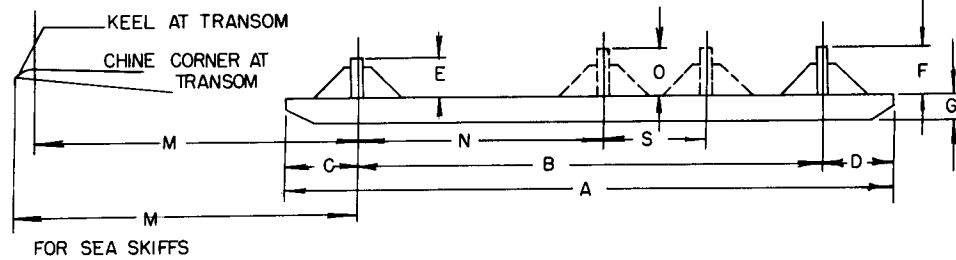
DATE 9-20-62

DRWG NO 10-00-01893

TB

NOTE: NO CRADLE PADDING INCLUDED IN THE FOLLOWING DIMENSIONS

BOAT STYLE	A	B	C	D	E	F	G	H	I	J	K	L	M	N	O	P	R	S
17' SKI BOAT & CUSTOM	10'-0"	6'-6"	1'-9"	1'-9"	0'-7"	0'-5"	0'-7 1/2"	3'-4"	0'-15/8"	6'-0"	3'-7"	0'-15/8"	4'-0"			0'-75/8"	0'-113/8"	
18' HOLIDAY	12'-0"	8'-9"	1'-9"	1'-6"	0'-75/8"	0'-9 1/2"	0'-7 1/2"	3'-4"	0'-15/8"	6'-0"	3'-7"	0'-15/8"	3'-9 1/4"			0'-9 1/2"	1'-3 3/4"	
20' CARAVELLE	12'-0"	8'-9 1/2"	1'-10 1/2"	1'-4"	0'-10 1/4"	0'-1 1/2"	0'-7 1/2"	3'-4"	0'-15/8"	6'-0"	3'-11"	0'-15/8"	4'-7"			0'-8 3/8"	1'-13/8"	
20' HOLIDAY	12'-0"	8'-9 1/4"	1'-10 1/2"	1'-4 1/4"	0'-9 7/8"	0'-11 5/8"	0'-7 1/2"	3'-4"	0'-15/8"	6'-0"	3'-7"	0'-15/8"	4'-6 1/2"			0'-8 5/8"	1'-25/8"	
27' CONSTELLATION	16'-1"	12'-2"	1'-11"	2'-0"	1'-1"	1'-4 1/2"	0'-7 1/2"	4'-0"	0'-3 1/4"	8'-0"	6'-6"	0'-3 1/4"	5'-3 1/2"			0'-8 1/2"	1'-4"	
30' CONSTELLATION	18'-0"	13'-6"	2'-3 1/8"	2'-2 7/8"	0'-11 1/8"	1'-4"	0'-7 5/8"	4'-5"	0'-3 1/4"	9'-1 1/4"	6'-4 1/2"	0'-3 1/4"	6'-4 1/4"			0'-10 1/8"	1'-2 1/2"	
34' CONSTELLATION & SEDAN	20'-0"	16'-8"	1'-7"	1'-9"	1'-0"	1'-4"	0'-7 1/2"	4'-0 5/8"	0'-4 7/8"	9'-0"	6'-10 1/2"	0'-3 1/4"	5'-5"	6'-8"	1'-0"	0'-5"	1'-2"	
37' CONSTELLATION	22'-7"	19'-3"	1'-9"	1'-7"	0'-11 5/8"	1'-4"	0'-7 1/2"	5'-0"	0'-4 7/8"	9'-4"	6'-6"	0'-3 1/4"	6'-1"	9'-1"	1'-0"	0'-7 1/2"	1'-4 1/4"	
37' TRI-CABIN CONST.	24'-0"	20'-0"	2'-0"	2'-0"	1'-1"	1'-9 1/2"	0'-7 1/2"	5'-1/2"	0'-4 7/8"	9'-6"	7'-5"	0'-3 1/4"	4'-9"	8'-8"	1'-1 1/4"	0'-10"	1'-5 1/2"	
42' CONST. & CONQUEROR	26'-0"	21'-10"	2'-6"	1'-8"	1'-3 3/4"	1'-3 1/4"	0'-9 1/4"	5'-2 1/2"	0'-4 7/8"	9'-7"	8'-8"	0'-3 1/4"	5'-7"	12'-9"	0'-11 1/2"	0'-8"	1'-6 1/4"	
46' CONSTELLATION	27'-3"	22'-10"	2'-2 1/2"	2'-2 1/2"	1'-6 1/2"	1'-6 1/2"	0'-9 1/2"	5'-7"	0'-5"	11'-0"	10'-0"	0'-3 1/4"	6'-8"	11'-5 1/4"	1'-3"	0'-9"	1'-9"	
52' CONSTELLATION	37'-2"	34'-2"	2'-0"	0'-18"	2'-5"	2'-4"	0'-9 5/8"	5'-7"	0'-6 1/2"	0'-11 1/2"	9'-6"	0'-3 1/2"	3'-9"	13'-9 1/2"	1'-11"	1'-1 1/2"	2'-10 1/2"	11'-10"
57' CONSTELLATION	38'-11 1/2"	32'-7 1/2"	3'-2"	3'-2"	2'-3 1/2"	2'-7"	0'-9 5/8"	5'-7"	0'-6 1/2"	8'-11 1/2"	8'-1/2"	0'-3 1/2"	9'-3"	13'-3"	1'-11 1/2"	1'-3"	2'-6"	11'-10"
65' MOTOR YACHT		SEE	DRWG	NO. 10-00-04014														
SEA SKIFFS																		
19' SPORTSMAN	12'-0"	8'-7 1/2"	1'-7"	1'-8"	1'-1 1/4"	1'-1 1/4"	0'-7 5/8"	2'-10 1/2"	0'-15/8"	5'-11 1/2"	5'-1/4"	0'-2"	3'-11 1/4"			0'-8 1/8"	1'-1 3/8"	
21' SPORTSMAN	12'-0"	8'-8"	1'-7"	1'-10"	0'-11"	0'-9"	0'-7 5/8"	4'-0"	0'-2"	6'-4"	5'-6"	0'-3 3/4"	4'-4 3/4"			0'-8"	1'-2 1/2"	
24' SPORTSMAN	14'-0"	10'-1"	1'-7 3/4"	1'-9 1/4"	1'-3 1/4"	1'-2 3/4"	0'-7 5/8"	4'-0"	0'-2"	7'-7"	4'-11"	0'-3 3/4"	4'-7 1/2"			0'-10 1/2"	1'-4 1/2"	
24' RANGER	14'-0"	10'-1"	1'-7 3/4"	1'-9 1/4"	1'-3 1/4"	1'-2 3/4"	0'-7 5/8"	4'-0"	0'-2"	7'-7"	4'-11"	0'-3 3/4"	4'-7 1/2"			0'-10 1/2"	1'-4 1/2"	
27' CORINTHIAN EXPRESS	16'-0"	11'-2 1/2"	2'-5"	2'-5 1/4"	1'-2 3/4"	1'-2 1/2"	0'-7 5/8"	5'-1/2"	0'-4"	8'-6"	5'-10 1/4"	0'-3 3/4"	5'-10"			0'-10"	1'-1 1/2"	
28' SPORTSMAN	16'-0"	12'-5"	1'-8 1/2"	1'-11 1/4"	1'-3"	1'-4 1/2"	0'-7 5/8"	4'-0"	0'-4"	8'-2"	6'-3"	0'-3 3/4"	5'-0"			0'-10 1/2"	1'-2 3/4"	
31' SPORTS CRUISER	20'-0"	16'-7"	1'-8 1/2"	1'-8 1/2"	1'-6 1/4"	1'-9 3/8"	0'-7 5/8"	4'-10 1/2"	0'-3 3/4"	8'-8 3/4"	6'-3 3/4"	0'-3 3/4"	4'-2"	6'-6 3/4"	1'-6"	1'-6 3/4"	0'-11 1/4"	
31' CUSTOM CORINTHIAN	20'-0"	16'-7"	1'-8 1/2"	1'-8 1/2"	1'-6 1/4"	1'-9 3/8"	0'-7 5/8"	4'-10 1/2"	0'-3 3/4"	8'-8 3/4"	6'-3 3/4"	0'-3 3/4"	4'-2"	6'-6 3/4"	1'-6"	1'-6 3/4"	0'-11 1/4"	
34' CUSTOM CORINTHIAN	20'-0"	17'-3 1/2"	1'-4 3/4"	1'-4 7/8"	1'-3 3/4"	1'-6"	0'-7 5/8"	4'-10 1/2"	0'-3 3/4"	8'-11 3/8"	7'-5 3/4"	0'-3 3/4"	4'-1/4"	7'-10 1/2"	1'-3 1/2"	0'-8 1/2"	1'-1 3/4"	
38' CUSTOM CORINTHIAN	20'-0"	17'-6 1/4"	1'-3 1/4"	1'-3 3/4"	1'-1 1/2"	1'-6 1/4"	0'-7 5/8"	4'-10"	0'-5 1/8"	8'-4"	6'-9 1/2"	0'-3 3/4"	7'-5 3/4"	8'-10"	1'-1"	0'-10 1/8"	1'-3 1/8"	
42' CUSTOM CORINTHIAN	28'-0"	24'-0"	2'-0"	2'-0"	1'-1 3/4"	1'-1 3/4"	0'-9"	4'-10"	0'-4 5/8"	9'-7"	7'-4 1/4"	0'-3 1/4"	6'-11 1/2"	12'-0"	0'-11"	0'-10 1/2"	1'-4"	
CAVALIERS																		
16' CUSTOM SKI	10'-0"	7'-7"	1'-3"	1'-2"	0'-7 1/2"	0'-7"	0'-7 1/2"	3'-4"	0'-15/8"	5'-7"	3'-7"	0'-15/8"	2'-6"			0'-6 7/8"	0'-11"	
19' GOLDEN ARROW & TDP	12'-0"	9'-2"	1'-5"	1'-5"	0'-8 3/4"	0'-10 1/2"	0'-7 1/2"	3'-4"	0'-15/8"	6'-3"	4'-8"	0'-15/8"	2'-7"			0'-6 3/4"	0'-10 3/4"	
24' WEEKENDER		NOT BUILT												NOT BUILT				
24' FIESTA	16'-0"	9'-1"	2'-8"	4'-2"	1'-1 1/2"	1'-2 1/4"	0'-7 5/8"	3'-9"	0'-2"	7'-1 1/4"	5'-6 3/8"	0'-2"	6'-1"			0'-9 5/8"	1'-4 1/4"	
26' FUTURA	16'-0"	11'-1/2"	2'-3 1/2"	2'-3 3/4"	0'-10 3/8"	0'-9 7/8"	0'-5 3/4"	3'-9 1/2"	0'-2 1/2"	7'-7 1/2"	5'-10 1/2"	0'-2 1/2"	6'-7"			0'-5 3/4"	0'-10 1/2"	
28' FUTURA	16'-0"	11'-6 1/2"	2'-2"	2'-2"	1'-2 1/2"	1'-7"	0'-6"	4'-0"	0'-3 3/8"	8'-8"	6'-9"	0'-3 1/4"	5'-5 1/4"			0'-10"	1'-3"	
31' FUTURA	18'-2"	14'-11 1/2"	2'-1 3/4"	1'-10 3/4"	0'-11"	1'-3"	0'-6"	4'-0"	0'-2 5/8"	8'-6 1/4"	6'-7"	0'-2 5/8"	5'-1"			0'-8"	1'-2 1/2"	
35' YACHT	22'-4"	18'-2"	2'-2"	2'-0"	1'-3"	1'-9"	0'-7 1/2"	4'-11"	0'-4 7/8"	9'-6"	8'-0"	0'-3 1/4"	5'-2"	9'-7"	1'-4"	0'-8"	1'-5 1/2"	



HULL NO. 1962
 SERIES
 CRADLE DIMENSIONS
 CHRIS-CRAFT CORPORATION
 POMPANO BEACH, FLORIDA
 DRAWN BY R.F.M. MATERIAL DATE 1-10-62
 CHECKED SCALE
 APPROVED DRAWING NO. 10.00-00743

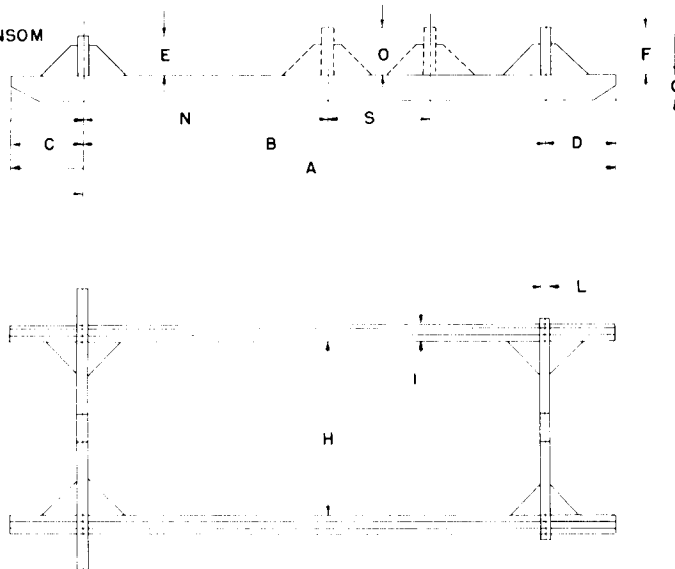
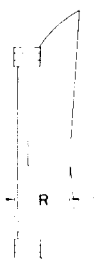
NOTE: NO CRADLE PADDING INCLUDED IN THE FOLLOWING DIMENSIONS

BOAT STYLE	A	B	C	D	E	F	G	H	I	J	K	L	M	N	O	P	R	S
16 FT. SKI BOAT	10'	6'-6"	1'-9"	1'-9"	7"	5"	7 1/2"	3'-4"	15/8"	6'	3'-7"	15/8"	4'			7 5/8"	11 3/8"	
18 FT. HOLIDAY	12'	8'-9"	1'-9"	1'-6"	7 5/8"	9 1/2"	7 1/2"	3'-4"	15/8"	6'	3'-7"	15/8"	3'-9 1/4"			9 1/2"	1'-3/4"	
20 FT. HOLIDAY	12'	8'-9 1/4"	1'-10 1/2"	1'-4 1/4"	9 7/8"	11 5/8"	7 1/2"	3'-4"	15/8"	6'	3'-7"	15/8"	4'-6 1/2"			8 5/8"	1'-25/8"	
23 FT. HOLIDAY	14'	10'	2'	2'	11 3/8"	1'-13/8"	7 1/2"	3'-11"	3 1/4"	6'-5"	4'-5 1/2"	15/8"	5'-7"			8 5/8"	1'-31/8"	
25 FT. CONSTELLATION	15'-4 1/2"	11'-3 1/4"	2'-5/8"	2'-5/8"	11"	1'-33/4"	7 1/2"	4'-0"	3 1/4"	7'-4 1/2"	6'-10 3/4"	3 1/4"	4'-9"			10 1/4"	1'-4 1/2"	
28 FT. CONSTELLATION	16'-1"	12'-2"	1'-11"	2'-0"	1'-1"	1'-4 1/2"	7 1/2"	4'-0"	3 1/4"	8'-0"	6'-6"	3 1/4"	5'-3 1/2"			8 1/2"	1'-4"	
28 FT. SPORT FISHERMAN	16'-1"	12'-2"	1'-11"	2'-0"	1'-1"	1'-4 1/2"	7 1/2"	4'-0"	3 1/4"	8'-0"	6'-6"	3 1/4"	5'-3 1/2"			8 1/2"	1'-4"	
32 FT. CONSTELLATION	20'-5 1/2"	16'-11 1/2"	2'-4 3/4"	1'-11 1/4"	1'-5/8"	1'-3"	7 3/8"	4'-6 1/2"	4 7/8"	9'-1"	6'-4"	3 1/4"	5'-4 1/4"	6'-4 3/8"	1'-1/2"	6 1/2"	1'-3 1/4"	
33 FT. SPORT FISHERMAN	19'-11 1/2"	15'-3/4"	2'-5 5/8"	2'-5/8"	1'-5 3/4"	1'-4 1/4"	7 1/4"	4'-10"	4 7/8"	8'-10"	6'-7 1/2"	3 1/4"	7'-5 1/2"	6'-5"	1'-3 1/4"	7'-1/2"	1'-5 3/4"	
36 FT. CONSTELLATION	22'-11 1/2"	18'-11 1/2"	1'-7"	1'-7"	1'-2 1/4"	1'-4 1/4"	7 3/8"	4'-11"	4 7/8"	11'-3 1/2"	6'-8"	3 1/4"	5'-9"	9'-1/2"	1'-11 1/4"	8"	1'-5"	
37 FT. D.C.F.B.	24'-0"	19'-10"	2'-1"	2'-1"	1'-1"	1'-9 1/2"	7 3/8"	5'-2"	4 7/8"	9'-6"	7'-5"	3 1/4"	5'-0"	8'-7"	1'-1"	9 1/4"	1'-5 1/4"	
40 FT. SPORT FISHERMAN	26'-14"	21'-11 1/2"	2'-13/8"	1'-11 3/8"	1'-5 1/2"	1'-11 1/2"	9 3/8"	5'-3"	4 7/8"	9'-4 1/2"	7'-4 1/2"	3 1/4"	5'-7 1/2"	13'-0"	1'-4 3/4"	8 1/4"	1'-8 1/2"	
41 FT. CONQUEROR	24'-0"	20'-9"	1'-7 1/2"	1'-7 1/2"	1'-5 1/2"	1'-3 3/4"	7 1/2"	4'-10 1/2"	5"	10'-9"	7'-5 3/4"	3 3/8"	6'-8"	11'-7"	1'-2"	6'-1/4"	1'-4 1/2"	9'-2"
45 FT. CONSTELLATION	28'-0"	23'-7"	2'-2 1/2"	2'-2 1/2"	1'-5"	1'-7"	9 5/8"	5'-7"	5"	10'-10 1/2"	8'-10"	3 3/8"	6'-8"	9'-5"	1'-2 3/4"	8 1/2"	1'-7 1/2"	14'-2"
50 FT. CONSTELLATION	37'-3"	33'-3"	2'-0"	2'-0"	1'-5 5/8"	2'-11 1/2"	9 5/8"	5'-7"	6 1/2"	10'-9 1/2"	9'-6"	3 1/4"	3'-10"	14'-0"	1'-4 3/4"	11 5/8"	2'-1/8"	10'-9"
55 FT. CONSTELLATION	37'-0"	32'-9"	2'-11 1/2"	2'-11 1/2"	2'-3"	2'-2"	9 5/8"	5'-7"	6 3/4"	10'-3"	8'-4 3/4"	3 3/8"	7'-7 1/2"	13'-2"	1'-9"	11 3/4"	1'-5 1/2"	10'-9"
60 FT. MOTOR YACHT		36'-9"					9 5/8"					3 1/4"	6'-3"	8'-6"				8'-2"
18 FT. SPORTSMAN	12'-0"	8'-8"	1'-8"	1'-10"	1'-1"	1'-1 1/2"	8"	2'-11"	2"	6'-0"	5'-0"	3 1/2"	3'-11 1/4"			10"	1'-4"	
20 FT. SPORTSMAN	12'-0"	9'-2"	1'-8"	1'-6"	1'-1/4"	9"	8"	4'-0"	2"	6'-4"	5'-6"	4"	4'-3"			8"	1'-2 3/4"	
23 FT. SPORTSMAN	14'-1"	10'-8 1/2"	1'-8"	1'-9"	1'-4"	1'-2"	8"	4'-0"	2"	6'-11 1/2"	5'-11"	4"	4'-8 1/2"			10 1/2"	1'-5"	
23 FT. RANGER	14'-1"	10'-8 1/2"	1'-8"	1'-9"	1'-4"	1'-2"	8"	4'-0"	2"	6'-11 1/2"	5'-11"	4"	4'-8 1/2"			10 1/2"	1'-5"	
27 FT. SPORTSMAN	16'-0"	12'-8"	1'-8"	1'-9"	1'-6"	1'-6"	8"	4'-0"	4"	7'-2"	6'-2 1/2"	4"	5'-2"			1'-1/2"	1'-8 1/2"	
27 FT. EXPRESS CRUISER	16'-0"	11'-3"	2'-5 1/4"	2'-5 1/4"	1'-3 1/4"	1'-2 1/2"	8"	5'-0"	4'-3/4"	8'-6"	5'-11 1/4"	4"	5'-8 1/2"			11 1/4"	1'-2 1/2"	
30 FT. CORINTHIAN	20'-0"	17'-6"	1'-4"	1'-4"	1'-5 1/2"	1'-4 1/2"	8"	4'-9 1/2"	4"	8'-0"	6'-1"	4"	4'-6"	8'-2"	1'-3"	1'-2"	1'-6 1/2"	
32 FT. CORINTHIAN	20'-0"	17'-5"	1'-4"	1'-3 1/2"	1'-11 1/2"	1'-6 1/4"	8"	4'-9 3/4"	6"	8'-4"	6'-9"	4"	7'-10"	8'-10"	1'-11 1/4"	10"	1'-4"	
37 FT. CORINTHIAN	19'-10 1/2"	17'-2 3/4"	1'-4"	1'-3 1/2"	1'-11 1/2"	1'-6 1/4"	7 3/8"	4'-9 3/4"	4 7/8"	8'-4"	6'-9"	3 1/4"	7'-10"	8'-8"	1'-11 1/4"	9"	1'-2 1/4"	
42 FT. CORINTHIAN	28'-0"	24'-0"	2'-0"	2'-0"	1'-13/4"	1'-13/4"	9"	4'-10"	4 5/8"	9'-7"	7'-4 1/4"	3 1/4"	6'-11 1/2"	12'-0"	11"	10 1/2"	16"	
16 FT. CUSTOM SKI BOAT	10'-0"	7'-7"	1'-3"	1'-2"	7 1/2"	7'-0"	7'-1/2"	3'-4"	15/8"	5'-7"	3'-7"	15/8"	2'-6"			6'-7/8"	11"	
18 FT. CUSTOM UTILITY	10'-0"	8'-4"	9 1/2"	10 1/2"	7 1/8"	4 1/2"	7 1/2"	3'-8"	15/8"	5'-8"	3'-11 1/4"	15/8"	2'-11 1/2"			7 1/2"	10 3/8"	
21 FT. SPORTSMAN	12'	8'-11 3/4"	1'-5 3/4"	1'-6 1/2"	10"	10"	7 1/2"	3'-4"	15/8"	6'	5'	15/8"	3'			9"	1'-2"	
21 FT. EXPRESS CRUISER	12'	8'-11 3/4"	1'-5 3/4"	1'-6 1/2"	10"	10"	7 1/2"	3'-4"	15/8"	6'	5'	15/8"	3'			9"	1'-2"	
25 FT. EXPRESS CRUISER	14'-0"	9'-3 1/2"	2'-3 1/2"	2'-4 1/2"	10 1/4"	9 1/2"	6"	3'-9"	2 1/2"	6'-8"	5'-10"	2 1/2"	6'-3"			5 1/2"	1'-1"	
26 FT. CUSTOM CRUISER	14'-0"	9'-3 1/2"	2'-3 1/2"	2'-4 1/2"	10 1/4"	9 1/2"	6"	3'-9"	2 1/2"	6'-8"	5'-10"	2 1/2"	6'-3"			5 1/2"	1'-1"	
28 FT. CUSTOM CRUISER	16'-0"	11'-6 1/2"	2'-2"	2'-2"	1'-2 1/2"	1'-7"	6"	4'-0"	3 3/8"	8'-8"	6'-9"	3 1/4"	5'-5 1/4"			10"	1'-3"	
30 FT. CUSTOM CRUISER	18'-2"	14'-11 1/2"	2'-1 3/4"	1'-10 3/4"	11"	1'-3"	6"	4'-0"	2 5/8"	8'-6 1/4"	6'-7"	2 5/8"	5'-1"			8"	1'-2 1/2"	
35 FT. CUSTOM YACHT	22'-2"	18'-2"	2'-0"	2'-0"	1'-3"	1'-9"	7 5/8"	4'-11"	4 7/8"	9'-6"	7'-11 1/2"	3 1/4"	5'-1"	9'-8 3/4"	1'-4"	8"	1'-5 1/2"	

PL AT TRANSOM

E CORNER AT TRANSOM

M
FOR SEA SKIFFS



HULL NO _____
 SERIES _____
 1959 - 1960
 CRADLE DIMENSIONS
 CHRIS-CRAFT CORPORATION
 POMPANO BEACH, FLORIDA
 MATERIAL _____ DRAWN _____ KB _____ DATE 10-10-59
 CHECKED _____ SCALE _____
 PART NO _____ APPROVED _____
 DRAWG. NO. A 15738

NOTE: NO CRADLE PADDING INCLUDED IN THE FOLLOWING DIMENSIONS

BOAT STYLE	A	B	C	D	E	F	G	H	I	J	K	L	M	N	O	P	R	S
17 FT SPORTSMAN	10'-0"	6'-3"	1'-10 1/2"	1'-10 1/2"	5 3/8"	4 1/2"	7 5/8"	2'-11 1/8"	1 5/8"	5'-8 1/2"	3'-10"	1 5/8"	3'-10"			8 3/8"	11 1/4"	
17 FT SKI BOAT	10'-0"	6'-3"	1'-10 1/2"	1'-10 1/2"	5 3/8"	4 1/2"	7 5/8"	2'-11 1/8"	1 5/8"	5'-8 1/2"	3'-10"	1 5/8"	3'-10"			8 3/8"	11 1/4"	
18 FT CONTINENTAL	12'-0"	8'-10"	1'-11 3/8"	1'-11 3/8"	2 5/8"	9 1/4"	9 5/8"	7 5/8"	2'-11 1/8"	1 5/8"	6'-0"	4'-0"	1 5/8"	3'-7"		10"	11 7/8"	
19 FT CAPRI	12'-0"	8'-7 7/8"	2'-1 1/2"	2'-5 5/8"	9 1/4"	9 5/8"	7 5/8"	2'-11 1/8"	1 5/8"	6'-0"	4'-0"	1 5/8"	3'-7"			10"	11 7/8"	
24 FT SPORTSMAN	14'-0"	10'-4 1/2"	1'-8"	1'-11 1/2"	9 5/8"	11 1/4"	7 5/8"	3'-11"	3 1/4"	7'-0"	4'-5 3/4"	1 5/8"	5'-1 1/2"			7 7/8"	1'-1 1/4"	
27 FT SEMI-ENCLOSED	16'-1"	12'-2"	2'-0"	1'-11"	1'-1"	1'-1"	7 1/2"	4'-0"	3 1/4"	8'-0"	6'-6"	3 1/4"	5'-1 1/2"			6 1/2"	1'-4"	
27 FT CONSTELLATION	16'-1"	12'-2"	2'-0"	1'-11"	1'-1"	1'-1"	7 1/2"	4'-0"	3 1/4"	8'-0"	6'-6"	3 1/4"	5'-1 1/2"			6 1/2"	1'-4"	
32 FT COMMANDER	20'-0"	16'-0"	2'-0"	2'-0"	1'-1"	1'-3 1/2"	7 1/2"	4'-6"	5"	9'-2"	6'-6"	3 1/4"	5'-4"	6'-5"	1'-1"	7"	1'-4"	
32 FT CONSTELLATION	20'-0"	16'-0"	2'-0"	2'-0"	1'-1"	1'-3 1/2"	7 1/2"	4'-6"	5"	9'-2"	6'-6"	3 1/4"	5'-4"	6'-5"	1'-1"	7"	1'-4"	
33 FT SPORT FISHERMAN	19'-11 1/2"	15'-3 3/4"	2'-5 5/8"	2'-5 5/8"	1'-5 3/4"	1'-4 1/4"	7 1/4"	4'-10"	4 7/8"	8'-10"	6'-7 1/2"	3 1/4"	7'-5 1/2"	6'-5"	1'-3 1/4"	7 1/2"	1'-5 3/4"	
33 FT SPORT CRUISER	19'-11 1/2"	15'-3 3/4"	2'-5 5/8"	2'-5 5/8"	1'-5 3/4"	1'-4 1/4"	7 1/4"	4'-10"	4 7/8"	8'-10"	6'-7 1/2"	3 1/4"	7'-5 1/2"	6'-5"	1'-3 1/4"	7 1/2"	1'-5 3/4"	
36 FT CONSTELLATION	22'-2"	18'-10"	1'-8"	1'-8"	1'-1"	1'-3 1/2"	7 1/4"	4'-11"	5"	7'-10"	6'-9"	3 1/4"	6'-0"	9'-0"	1'-0"	5"	1'-4 1/2"	
40 FT CONQUEROR	24'-6"	20'-8"	2'-2"	1'-8"	1'-5"	1'-3"	7 1/2"	4'-10"	5"	9'-8"	7'-4"	3 1/4"	5'-8"	11'-7"	1'-2"	6"	11"	
40 FT CONSTELLATION	24'-6"	20'-8"	2'-2"	1'-8"	1'-5"	1'-3"	7 1/2"	4'-10"	5"	9'-8"	7'-4"	3 1/4"	5'-8"	11'-7"	1'-2"	6"	11"	
40 FT SPORT FISHERMAN	26'-1 1/4"	21'-11 1/2"	2'-1 3/8"	1'-11 3/8"	1'-5 1/2"	1'-11 1/2"	9 3/8"	5'-3"	4 7/8"	9'-4 1/2"	7'-4 1/2"	3 1/4"	5'-7 1/2"	13'-0"	1'-4 3/4"	8 1/4"	1'-8 1/2"	
45 FT CONSTELLATION	28'-0"	23'-7"	2'-2 1/2"	2'-2 1/2"	1'-5"	1'-7"	9 5/8"	5'-7"	4 7/8"	10'-10 1/2"	8'-10"	3 1/4"	6'-9"	9'-5"	1'-3 1/2"	8 1/2"	1'-7 3/4"	
50 FT CONSTELLATION	36'-0"	33'-0"	2'-2 1/2"	2'-2 1/2"	1'-5 3/4"	1'-5 1/2"	9 5/8"	5'-7"	4 7/8"	10'-9"	9'-2 1/2"	3 1/4"	3'-10 1/2"	12'-5"	1'-4 3/4"	9 5/8"	1'-3 1/2"	12'-2 1/4"
50 FT CONSTELLATION																		
66 FT MOTOR YACHT																		
13 FT OPEN SEA SKIFF	12'-0"	8'-8"	1'-8"	1'-10"	1'-1"	1'-1 1/2"	8"	2'-11"	2"	6'-0"	5'-0"	5"	3'-9 3/4"			6 3/4"	11 1/4"	
20 FT OPEN SEA SKIFF	12'-0"	9'-2"	1'-8"	1'-6"	9 3/4"	9"	8"	4'-0"	2"	6'-4"	5'-6"	4"	4'-6"			4 3/4"	10 1/2"	
23 FT OPEN SEA SKIFF	14'-1"	10'-8 1/2"	1'-8"	1'-9"	1'-4"	1'-2"	8"	4'-0"	2"	7'-9"	6'-5 1/2"	4"	4'-7 1/4"			8"	1'-3"	
23 FT RANGER 2 SL	14'-1"	10'-8 1/2"	1'-8"	1'-9"	1'-4"	1'-2"	8"	4'-0"	2"	7'-9"	6'-5 1/2"	4"	4'-7 1/4"			8"	1'-3"	
27 FT OPEN SEA	16'-0"	12'-8"	1'-9"	1'-9"	1'-9 1/2"	1'-6"	8"	4'-0"	4"	7'-9"	6'-5 1/2"	4"	5'-1 3/4"			11"	1'-4 1/2"	
30 FT OPEN S/S HDTP 4 SL	20'-0"	16'-0"	2'-1"	2'-0"	1'-7 1/2"	1'-3 1/2"	8"	4'-9 1/2"	4"	8'-2 1/2"	6'-0"	4"	4'-6 1/2"	8'-0"	1'-4"	1'-0"	1'-7"	
32 FT SEA SKIFF 6 SL	20'-0"	17'-6"	1'-4"	1'-4"	1'-5 1/2"	1'-4 1/2"	8"	4'-9 1/2"	4"	8'-0"	6'-1"	4"	4'-3 1/2"	8'-2"	1'-3"	1'-0"	1'-5"	
36 FT SEA SKIFF 6 SL	19'-10 1/2"	17'-2 3/4"	1'-4"	1'-3 1/2"	1'-1 1/2"	1'-6 1/4"	7 3/8"	4'-9 3/4"	4 7/8"	8'-4"	6'-9"	3 1/4"	7'-10"	8'-8"	1'-1 1/4"	9"	1'-2 1/4"	
40 FT S/S HARDTOP 6 SL	26'-1"	22'-8"	1'-8"	1'-9"	1'-7"	1'-3 1/4"	9 5/8"	4'-9 1/2"	4 7/8"	9'-7 1/2"	6'-4"	3 1/4"	6'-7 1/2"	11'-5 1/2"	1'-2"	9 1/2"	1'-4 1/4"	
18 FT CAV. CUSTOM UTILITY	10'-0"	8'-4"	10 1/2"	10"	4 3/4"	6 3/4"	7 3/8"	3'-8"	1 5/8"	5'-8 1/4"	3'-10 3/4"	1 5/8"	2'-9"			10 3/8"	1'-2 1/2"	
23 FT CAV. SPORTSMAN	14'-0"	11'-6"	1'-1"	1'-2"	1'-2 1/2"	11"	6"	3'-6"	2 1/2"	6'-1 1/2"	4'-11 1/2"	2 1/2"	3'-2 1/2"			1'-3 1/2"	11 1/2"	
23 FT CAV. EXPRESS CR.	14'-0"	11'-6"	1'-1"	1'-2"	1'-2 1/2"	11"	6"	3'-6"	2 1/2"	6'-1 1/2"	4'-11 1/2"	2 1/2"	3'-2 1/2"			1'-3 1/2"	11 1/2"	
25 FT CAV. EXPRESS CR.	16'-0"	12'-6"	1'-9"	1'-9"	10 1/2"	1'-1 1/2"	6"	3'-9"	2 1/2"	5'-10"	7'-0"	2 3/4"	3'-1 1/2"			11"	5 1/2"	
25 FT CAV. CUSTOM CR.	16'-0"	12'-6"	1'-9"	1'-9"	10 1/2"	1'-1 1/2"	6"	3'-9"	2 1/2"	5'-10"	7'-0"	2 3/4"	3'-1 1/2"			11"	5 1/2"	
30 FT CAV. EXPRESS CR.	18'-2"	14'-2"	2'-2"	1'-10"	1'-0"	1'-4"	8 1/2"	4'-0"	2 3/4"	8'-6"	7'-1 1/2"	2 3/4"	5'-1"			9 1/2"	1'-3 1/2"	